

The 18th International Congress on  
Vertical Transportation Technologies

# ELEVCON 2010

## Lucerne, Switzerland



**2-4 June 2010**

**KKL Lucerne Congress Centre**

First Announcement  
Call for Papers



Please visit our website for all congress updates

[www.elevcon.com](http://www.elevcon.com)

## Dear Colleague,

We have great pleasure in issuing the first announcement of Elevcon 2010, the 18<sup>th</sup> world congress of the International Association of Elevator Engineers in Lucerne, Switzerland. We plan an outstanding program of presentations by leading experts from all over the world within the vertical transportation industry and we hope you will contribute to the success of the congress, either by presenting a paper or simply by your participation. The congress and exhibition of industry innovations are planned for three days at one of the most prestigious sites in Lucerne, the modern KKL - Lucerne Congress Centre, which is located by the lake in the center of the city.

### Join us in Lucerne for Elevcon 2010



#### Mr. Ami Lustig,

ESL – Eng. S. Lustig, Consulting Engineers Ltd, Israel  
Elevcon 2010 Chairman & Program Manager

#### Elevcon International Steering Committee

Mr. G.W. Gibson, IAEE Executive Board, U.S.A.

Mr. R. Howkins, Ove Arup & Partners, UK

Mr. John Inglis, OAM, IAEE President, Australia

Dr. A.T.P. So, City University, Hong Kong

Mr. J. Stier, IAEE Administrative Board

Mr. S. Targit, Asray, Turkey

Please visit our website for all congress updates

[www.elevcon.com](http://www.elevcon.com)

## Call for Papers

We have great pleasure in inviting you to share your experience, knowledge and opinions with other experts from all over the world by presenting a paper at Elevcon 2010.

The abstract of an original paper on all topics relevant to vertical transportation technologies should be no longer than 100 words, with 10 words title, classification of the topic, authors' name(s), company, address, email, phone and fax numbers. Proposals for workshops are welcomed as well. Workshops should discuss topics that involve the audience rather than being mini-sessions.

Once your abstract is accepted, guidelines for paper preparation and further information will be provided. The written papers will be included in the book Elevator Technology 18, Proceedings of Elevcon 2010. We should receive your abstract /proposal for workshops no later than 1 October 2009.

The official language of Elevcon 2010 will be English and will be used in all presentations and printed material.

Send your proposals to: Ami Lustig, Elevcon 2010 Chairman & Program Manager – Email: [lustig@elevcon.com](mailto:lustig@elevcon.com)

## Provisional Timetable

**1 October 2009** Deadline for abstracts and proposals for workshops

**1 February 2010** Publication of second announcement on our website

**2 June 2010** Opening session  
Sessions AM and PM  
Exhibition AM and PM  
Evening welcome reception

**3 June 2010** Sessions AM and PM  
Exhibition AM  
Evening tour followed by dinner (see last page)  
sponsored by **Schindler**

**4 June 2010** Sessions AM and PM  
Exhibition AM

## Lucerne

How to get to Lucerne

Direct fast trains link Lucerne to Zurich's international airport and from there KKL is just in front of the Lucerne train station.



### Places of interest

The city was founded in 1178 and offers many interesting sites, such as the Mill Bridge and Chapel Bridge with the 13th century octagonal Water Tower, the Old Town Hall, the City Wall, the Rittersche Palace, Hof Church, Musegg Wall, the Lion Monument, Hof, Jesuit and Franciscan churches, and the Glacier Garden, a relic from the Ice Age and many more. Lucerne has also many interesting museums, among them are the Transport Museum, the Hans Erni Museum, the Museum of Art (on the top floor of the KKL), the Rosengart Collection, the Nature Museum, the Museum of History, the Alpenium and the Bellpark Museum

### Touring Lucerne & Switzerland

Lucerne offers many walking tours of the city which are an excellent way to discover the town's history and landmarks. Alternatively one can take the City stroll by the city train. A 40-minute nonstop tour with audio guide (eight languages) drives the visitor through the past of the most famous sights of the town of Lucerne. It gives an interesting overview of the beautiful city. Sightseeing tours to other parts of the country, such as Montreux, Geneva, Zurich, etc. are also available.

### Currency

The official currency is the **Swiss Franc** as Switzerland is not part of the EU.

### Weather

Lucerne weather in June is usually pleasant and is 22°C midday.

Please visit our website for all congress updates

[www.elevcon.com](http://www.elevcon.com)

## Tour followed by dinner sponsored by Schindler

provisional itinerary (subject to changes) Thursday, June 3, 2010

Around 15:00 departure from Lucerne by boat. We shall take the funicular to go up to Buergenstock, where we shall see the Hammetschwand lift which is Europe's highest outdoor lift and travels a vertical 152m in less than a minute. We shall go up by lift to Hammetschwand and return to the lift station from where a short walk will bring us to the Buergenstock hotel. Participants who do not wish to hike can stay in the hotel area and enjoy an aperitif. Around 19:30 we shall dine at the Buergenstock Club returning at night to Lucerne.



## The Lucerne KKL Congress Centre

The KKL Lucerne is centrally located directly on the lake and right next to the railway station and the historical centre just few minutes walk from there.



## General information

There are several hotels within a short distance from the congress venue. Prior to the event, we shall publish the selected official congress hotel, a list of recommended hotels nearby and other hotels that can be booked through IAEE. We shall book a block of rooms at favorable rates in the official congress hotel to ensure accommodation for participants.

## Welcome reception

All participants and registered accompanying persons are invited to the welcome reception on 2 June in the evening.

## 2nd evening tour & dinner

For the second evening we plan a tour to a lift installation followed by a dinner sponsored by **Schindler**. All participants and registered accompanying persons are invited.

## Congress registration

The congress registration form is available on [www.elevcon.com](http://www.elevcon.com)

### The early registration fees are:

€760.00 - Congress package (registration until 31.01.2010)

€280.00 - Accompanying person fee

### Late registration supplements (after 01.02.2010)

€180.00 - Congress package late registration supplement

€ 60.00 – Accompanying person late registration supplement

**Congress package includes:** Congress kit (bag and badge), all coffee breaks, welcome reception, daily luncheons, tour and dinner programme, book of proceedings & congress material, access to all sessions and 3 days pass to visit the exhibition.

**Accompanying person package includes:** all coffee breaks, welcome reception, daily luncheons, tour and dinner programme, 3 days pass to visit the exhibition. Accompanying persons have no access to sessions.

## Exhibition

The exhibition, which is designed for a limited number of stands, will be open during all congress sessions. The exhibition hall is next to the main congress hall and the coffee break area. Poster sessions will also be held in this area. Invitations to visit the exhibition will be issued for members of the elevator industry in Switzerland. The floor plan and the application form for space are available on: [www.elevcon.com](http://www.elevcon.com).

For reservation of a stand please contact the exhibition secretariat:

By fax: +44-8701-300790 or +49-6925-577350 or

By e-mail [iaee@elevcon.com](mailto:iaee@elevcon.com) or [katrin\\_pust@elevcon.com](mailto:katrin_pust@elevcon.com)



# Contacts

please visit our website or contact:

**Ami Lustig, Congress Chairman**

Email: [lustig@elevcon.com](mailto:lustig@elevcon.com)

Fax: +972-3-5732893

**Joseph Stier, Administration**

Email: [iaee@elevcon.com](mailto:iaee@elevcon.com)

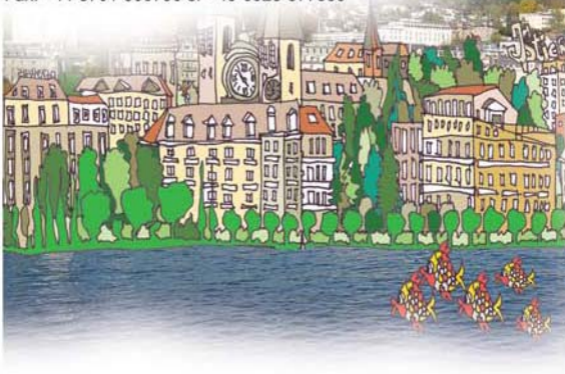
Fax: +44-8701-300790

**Elevcon 2010 Secretariat (IAEE)**

for registration, booking of stands, hotels:

Email: [iaee@elevcon.com](mailto:iaee@elevcon.com) or [katrin\\_pust@elevcon.com](mailto:katrin_pust@elevcon.com)

Fax: +44-8701-300790 or +49-6925-577350



IAEE General [iaee@elevcon.com](mailto:iaee@elevcon.com)

Ami Lustig [lustig@elevcon.com](mailto:lustig@elevcon.com)

Exhibition [katrin\\_pust@elevcon.com](mailto:katrin_pust@elevcon.com)

Albert So [bcalbstp@cityu.edu.hk](mailto:bcalbstp@cityu.edu.hk)

John Inglis [john@amron.com.au](mailto:john@amron.com.au)

Sefa Targit [stargit@asray.com](mailto:stargit@asray.com)

George Gibson [gwgibson@gwgibson.net](mailto:gwgibson@gwgibson.net)

Roger Howkins [roger.howkins@arup.com](mailto:roger.howkins@arup.com)

Secretariat – Katrin Pust [iaee@elevcon.com](mailto:iaee@elevcon.com)

or [katrin\\_pust@elevcon.com](mailto:katrin_pust@elevcon.com)

Joseph Stier [iaee@elevcon.com](mailto:iaee@elevcon.com)



Please visit our website for all congress updates

[www.elevcon.com](http://www.elevcon.com)